

**Let Florida Vote!**

**Tri-County LWV**

**ACLU** Florida

# What we'll cover...

- 2022 Legislature
- Local election administration reform
  - Early Voting
  - Vote by Mail
- Election administration advocacy

# 2021 Legislative Session

## Senate Bill 90

1. added restrictions to dropboxes for VBM
2. restricted ballot collection with potential criminal penalties

More recently, Ron Desantis has committed to take further action to restrict access to the vote

- Imposing time limits for voter list maintenance
- Suggested banning VBM dropboxes
- Suggested an “election fraud investigation office”
- Increasing penalties for ballot collection
- Effectively Ending the citizens’ initiative process

# Local election administration

- We are focusing on counties to promote equitable access to voting infrastructure, which is mostly determined at the county level.
- Vote by mail & rejection and cure rates
- Early voting, locations and accessibility

# Voting Methods

	<b>Mailed</b>	<b>Early</b>	<b>Election Day</b>	<b>Overall Turnout</b>
<b>Lake</b>	<b>32.64%</b>	<b>42.91%</b>	<b>24%</b>	<b>80.30%</b>
<b>Marion</b>	<b>35.91%</b>	<b>38.72%</b>	<b>25%</b>	<b>77.7%</b>
<b>Sumter</b>	<b>43.93%</b>	<b>46.24%</b>	<b>10%</b>	<b>88.0%</b>

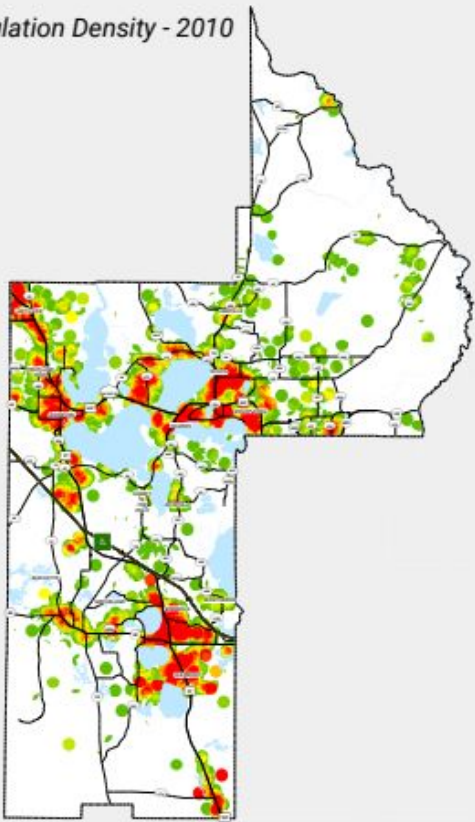
# Early Voting

- Lake : 10 Locations, 13 Days
- Marion: 9 Locations, 10 Days
- Sumter: 6 Locations, 12 Days

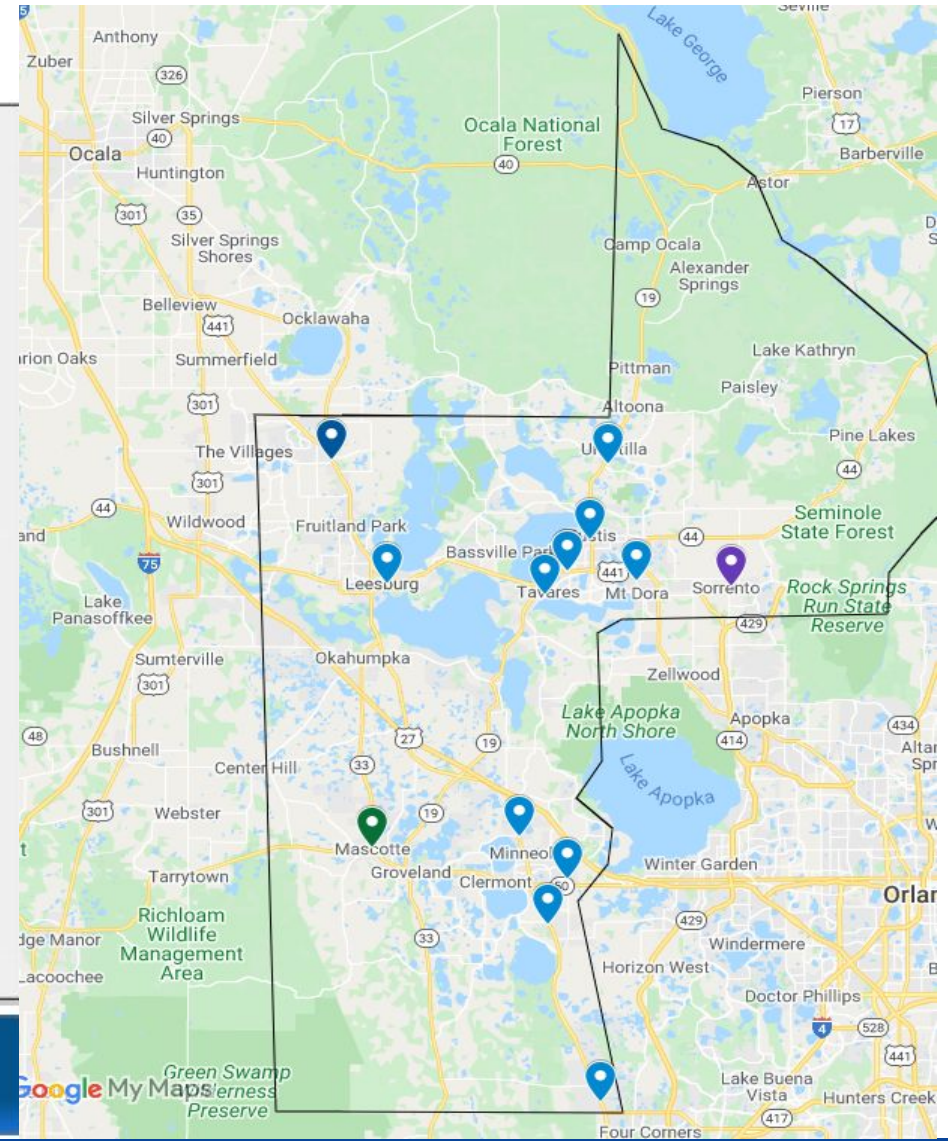
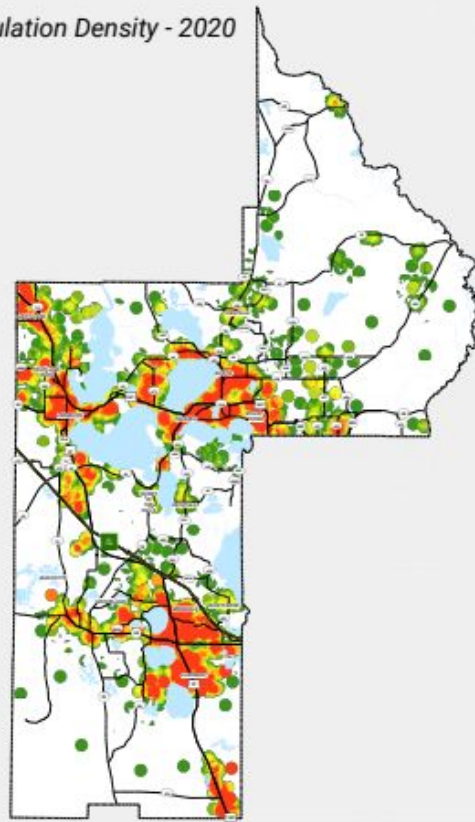
	<b>Mailed</b>	<b>Early</b>	<b>Election Day</b>	<b>Overall Turnout</b>
<b>Lake</b>	<b>32.64%</b>	<b>42.91%</b>	<b>24%</b>	<b>80.30%</b>
<b>Marion</b>	<b>35.91%</b>	<b>38.72%</b>	<b>25%</b>	<b>77.7%</b>
<b>Sumter</b>	<b>43.93%</b>	<b>46.24%</b>	<b>10%</b>	<b>88.0%</b>

# Early Voting

Population Density - 2010



Population Density - 2020



Population Density per Square Mile



MAP DATE: 6/11/2021 SOURCE: ESRI, Lake County Enterprise Support

# Early Voting Recommendations

- Make early voting available for the entire period allowed by Florida law at as many locations as can be staffed to reduce the potential for crowds.
- Ensure SOE staff is accessible to voters on the weekends during early voting period, either in the office or by phone.
- Offer enough early voting locations to prevent long wait times and offer non-business hours.
- Ensure early voting locations are accessible to all.
  - Black voters are most likely to vote early (45% did so in the 2018 General Election), as are voters between 45 and 64 years old (36% in 2018 General). Neighborhoods and business districts reflecting these demographics should have early voting sites to ensure access.
  - Use college campuses as early voting sites to promote youth participation.
- Prioritize keeping early voting open through the Sunday before the election.
- Ensure SOE staff is accessible to voters on the weekends during early voting period, either in the office or by phone.



# Vote by Mail

## Report Findings

Younger voters were more than three times as likely as older voters, and new registrants were twice as likely as more established registrants to have their VBM ballots initially flagged for rejection by SOEs.

- Younger voters who had their VBM ballots initially flagged for rejection were over six percentage points less likely than older voters to cure VBM ballots initially flagged for rejection;
- Racial and ethnic minority voters who cast VBM ballots were over 60 percent more likely than white voters to have their VBM ballot initially flagged for rejection by SOEs;
- There is considerable variation in both the rejection rates and cure rates of VBM ballots cast across the state's 67 counties, indicating non-uniformity in both the standards used by election officials to initially reject VBM ballots and the ability of voters casting VBM ballots flagged with a problem to cure them.

# Vote by Mail

- Ballot rejection rates

## 2018

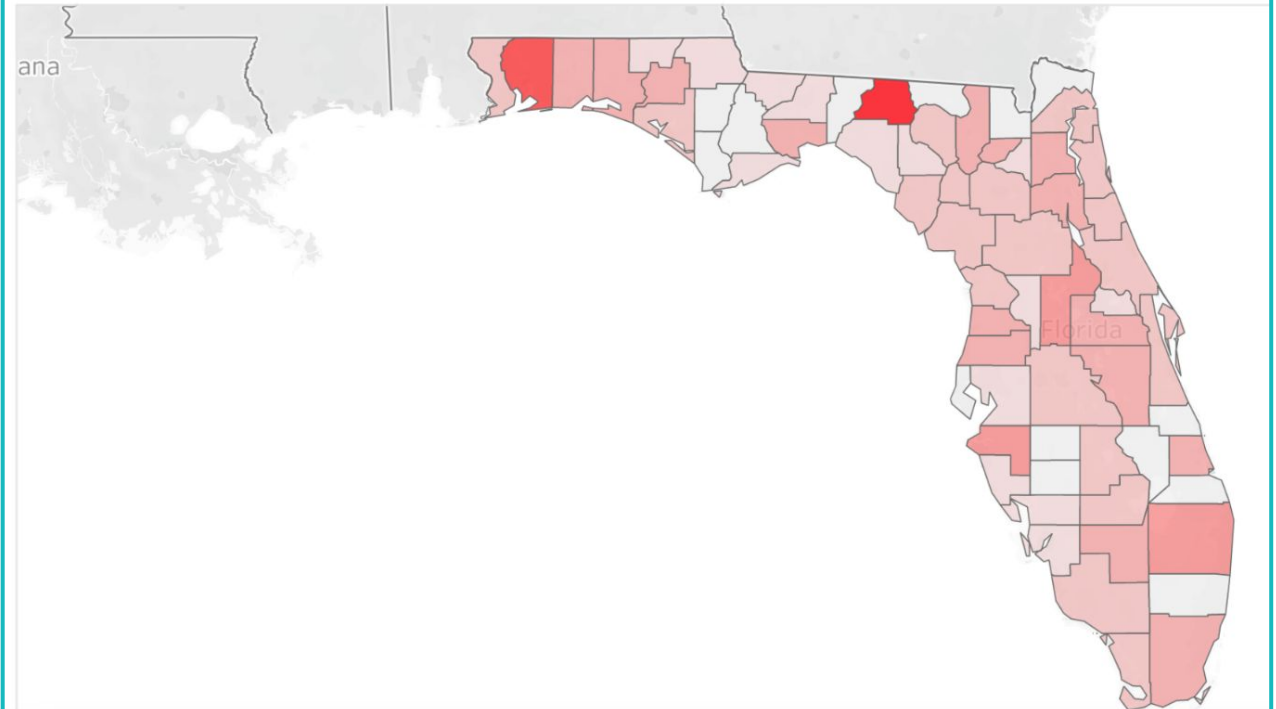
- Lake 2.26%
- Marion .2%
- Sumter .66%

## 2020

- Lake .52%
- Marion .31%
- Sumter .15%

### FL VBM Rejection Rates by [Bill Fetty](#)

FL VBM Rejection Rates, 2020



© 2021 Mapbox © OpenStreetMap

# Vote by Mail

## **Recommendations for SOE's**

- There is a need for greater simplicity with the instructions accompanying VBM ballots; more uniformity in the design of return VBM envelopes; and standard practices to allow voters to cure VBM ballots flagged with a problem;
- SOEs should inform voters on their websites not only if a voter's VBM ballot has been received, but if it has been counted as valid;
- There should be improved training of SOEs and canvassing boards to ensure uniformity in determining the validity of VBM ballot return envelopes and cure affidavits

# Advocate!

- Meet regularly with SOE's to discuss the state of elections in your community
- [ACLU FL Advocacy Guide](#)

# Sources

2020 Election Data: [Casting, Rejecting, and Curing Vote-by-Mail Ballots in Florida's 2020 General Election](#), **All Voting is Local**

2018 Election data and Advocacy Guide: [LET FLORIDA VOTE: CORONAVIRUS IS ONLY THE NEWEST BARRIER TO VOTING IN FLORIDA](#)

Bill Fetty: [Cure Rate Map](#) , [Rejection Rate Map](#)

# Upcoming Events

[Let Lake County Vote](#) 2/17 5:30 PM

[Let Orange County Vote](#) 2/16 6pm

[Statewide Voting rights Meeting](#) 2/10 5:30pm

# Have more questions or want to get involved?

Contact Us Here!

Sam Delgado, Statewide Voting Rights Organizer  
e-mail: [sdelgado@aclufl.org](mailto:sdelgado@aclufl.org); 954-812-3887